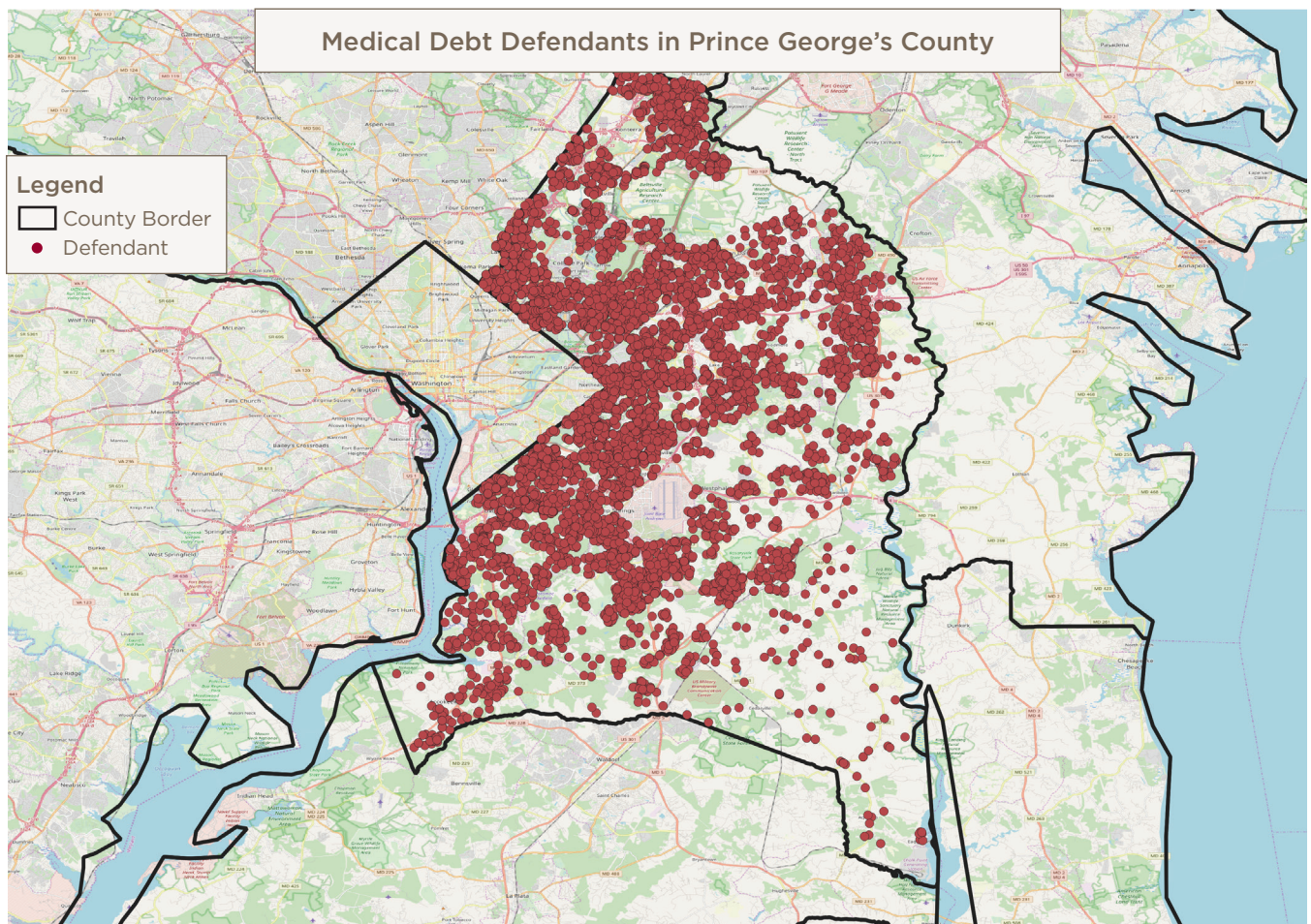


PRINCE GEORGE'S COUNTY MEDICAL DEBT LAWSUITS 2009 – 2018

Medical Debt Lawsuits Filed Against County Residents¹

Total medical debt lawsuits	8,683
Total amount of medical debt sought through lawsuits	\$20,125,033
Median amount of medical debt per lawsuit (meaning half the lawsuits were for less and half were for more)	\$1,279
Total cases involving wage and property garnishments	2,087
Total amount sought through garnishments	\$5,069,043

Where Medical Debt Lawsuit Defendants Live



Hospitals Filing Medical Debt Lawsuits Against County Residents

Hospital Name	System	Total Lawsuits	Amount	Median Amount	Garnishment Total	Garnishment Amount
MedStar Southern Maryland Hospital Center	MedStar Health	2,469	\$4,805,320	\$1,071	555	\$1,247,693
University of Maryland Capital Region Health at Laurel Regional and Prince George's Hospital	University of Maryland Medical System	1,898	\$4,694,111	\$1,724	986	\$2,558,749
Johns Hopkins Suburban Hospital	Johns Hopkins Health System	1,396	\$2,712,523	\$793	39	\$71,675
University of Maryland Medical Center	University of Maryland Medical System	415	\$2,323,263	\$2,820	59	\$288,462
Holy Cross Hospital	Trinity Health	397	\$907,685	\$1,298	45	\$109,373
University of Maryland Charles Regional Medical Center	University of Maryland Medical System	284	\$409,024	\$1,006	32	\$50,283
Johns Hopkins Howard County General Hospital	Johns Hopkins Health System	222	\$381,703	\$1,022	49	\$91,653
Anne Arundel Medical Center		208	\$1,123,353	\$4,203	39	\$201,738
Fort Washington Medical Center		194	\$399,963	\$1,012	84	\$126,454
Johns Hopkins Hospital	Johns Hopkins Health System	159	\$377,626	\$1,447	30	\$51,376
Greater Baltimore Medical Center		123	\$181,395	\$775	32	\$61,411
Doctors Community Hospital		93	\$139,390	\$567	2	\$2,297
Sinai Hospital of Baltimore	LifeBridge Health	83	\$133,384	\$994	23	\$31,524
Saint Agnes Healthcare	Ascension Healthcare	73	\$114,221	\$946	15	\$17,491
Mercy Medical Center		68	\$80,445	\$890	10	\$9,757
MedStar Health (only system info reported)		63	\$51,789	\$447	1	\$552
Adventist HealthCare (only system info reported)		58	\$270,046	\$2,237		
CalvertHealth Medical Center		57	\$87,304	\$955	8	\$10,756
MedStar Montgomery Medical Center	MedStar Health	56	\$152,713	\$1,503	6	\$9,414
Northwest Hospital	LifeBridge Health	42	\$56,354	\$1,029	10	\$12,856
University of Maryland Rehabilitation & Orthopaedic Institute	University of Maryland Medical System	40	\$159,293	\$1,964	5	\$10,029

Hospital Name	System	Total Lawsuits	Amount	Median Amount	Garnishment Total	Garnishment Amount
Peninsula Regional Medical Center		38	\$63,556	\$626	4	\$5,132
Johns Hopkins Bayview Medical Center	Johns Hopkins Health System	33	\$56,469	\$1,058	8	\$12,501
MedStar Union Memorial Hospital	MedStar Health	32	\$72,072	\$1,382	12	\$27,498
MedStar St. Mary's Hospital	MedStar Health	28	\$25,782	\$842	2	\$5,270
MedStar Franklin Square Medical Center	MedStar Health	26	\$42,323	\$947	11	\$17,369
MedStar Harbor Hospital	MedStar Health	25	\$56,137	\$1,160	5	\$14,664
MedStar Good Samaritan Hospital	MedStar Health	19	\$27,426	\$881	4	\$8,738
University of Maryland Medical Center Midtown Campus	University of Maryland Medical System	19	\$43,986	\$1,812	2	\$1,978
University of Maryland Baltimore Washington Medical Center	University of Maryland Medical System	17	\$37,842	\$1,360	5	\$8,016
University of Maryland Shore Medical Center	University of Maryland Medical System	13	\$21,254	\$933	3	\$3,253
Meritus Medical Center		6	\$22,857	\$1,522		
University of Maryland St. Joseph Medical Center	University of Maryland Medical System	6	\$9,039	\$1,271		
Adventist Healthcare Washington Adventist Hospital	Adventist HealthCare	5	\$16,974	\$2,508		
Carroll Hospital Center	LifeBridge Health	4	\$22,868	\$2,754	1	\$1,078
University of Maryland Medical System (only system info reported)		4	\$27,997	\$5,448		
Atlantic General Hospital		3	\$1,698	\$648		
LifeBridge Health (only system info reported)		2	\$1,724	\$862		
Mt. Washington Pediatric Hospital	University of Maryland Medical System	2	\$1,742	\$871		
Adventist Healthcare Shady Grove Medical Center	Adventist HealthCare	1	\$10,534	\$10,534		
Frederick Regional Health System		1	\$824	\$824		
Johns Hopkins Health System (only system info reported)		1	\$1,024	\$1,024		
Total		8,683	\$20,125,033	\$1,279	2,087	\$5,069,043

County Information²

Total Population	Individuals Living in Poverty	Children Living in Poverty	Median Household Income	Individuals Without Health Insurance	Unemployed	White	African American	Hispanic or Latino	Asian
885,531	82,328	25,754	\$78,607	106,761	37,548	111,815	565,323	155,904	36,712

Medical Debt Lawsuits Victimize Low-Wage Workers

Top three private-sector employers for wage garnishment victims:

- Safeway
- Walmart
- Home Depot

Medical Debt Lawsuits Victimize Public Workers

Top three public-sector employers for wage garnishment victims:

- Public Schools
- State of Maryland
- Federal Government Agencies

Share of County Residents with Medical Debt in Collections³

- Overall: 18%
- White communities: NA
- Communities of color: 19%

Executive Compensation for Top Hospitals Suing County Residents: Last Five Years⁴

Hospital Name	System	Total Executive Compensation	Number of Annual Payments to Executives	Number of Individual Executives	Number of Annual Payments More Than \$1 Million	Total Number of Payments That Put Executives in Maryland's Top 1%
Johns Hopkins Hospital	Johns Hopkins Health System	\$124,919,403	196	56	35	82
University of Maryland Medical Center	University of Maryland Medical System	\$80,154,293	79	26	21	76
MedStar Southern Maryland Hospital Center	MedStar Health	\$72,872,613	64	24	20	35
Johns Hopkins Howard County General Hospital	Johns Hopkins Health System	\$51,722,888	96	34	12	28
Johns Hopkins Suburban Hospital	Johns Hopkins Health System	\$45,245,523	81	32	7	32
Holy Cross Hospital	Trinity Health	\$44,639,989	82	29	9	24
Anne Arundel Medical Center		\$38,344,716	66	19	6	42
University of Maryland Charles Regional Medical Center	University of Maryland Medical System	\$38,300,966	62	17	5	21
University of Maryland Capital Region Health at Laurel Regional and Prince George's Hospital	University of Maryland Medical System	\$28,891,437	70	32	4	14
Fort Washington Medical Center		\$5,366,554	24	14		1

Net Income for Top Hospitals Filing Medical Debt Lawsuits in County: 2009 – 2018⁵

Hospital Name	System	Total Operating Revenues	Net Income
University of Maryland Medical Center	University of Maryland Medical System	\$12,606,743,000	\$692,657,000
Johns Hopkins Hospital	Johns Hopkins Health System	\$19,861,730,000	\$609,011,000
Holy Cross Hospital	Trinity Health	\$4,522,082,000	\$309,793,000
Johns Hopkins Suburban Hospital	Johns Hopkins Health System	\$2,722,053,000	\$182,209,000
Anne Arundel Medical Center		\$5,904,222,000	\$161,933,000
Johns Hopkins Howard County General Hospital	Johns Hopkins Health System	\$2,459,510,000	\$94,557,000
University of Maryland Charles Regional Medical Center	University of Maryland Medical System	\$1,067,991,147	\$77,513,321
University of Maryland Capital Region Health at Laurel Regional and Prince George's Hospital	University of Maryland Medical System	\$3,331,541,473	\$15,536,464
Fort Washington Medical Center		\$424,149,011	\$6,605,068
MedStar Southern Maryland Hospital Center	MedStar Health	\$2,184,984,300	-\$29,264,600

Profiting from Charity Rate Support⁶: Charity Rate Support Levels for the Top Hospitals Suing County Residents for Medical Debt, 2014 - 2018

Hospital name	System	Charity Care Provided — Last Five Years	Charity Care Rate Support Total — Last Five Years	Charity Care Rate Support Surplus*: Last Five Years	Rank: Largest Surplus* of Charity Rate Support
Johns Hopkins Hospital	Johns Hopkins Health System	\$133,216,000	\$169,496,419	\$36,280,419	1
University of Maryland Medical Center	University of Maryland Medical System	\$179,526,226	\$205,952,948	\$26,426,722	2
University of Maryland Capital Region Health at Laurel Regional and Prince George's Hospital	University of Maryland Medical System	\$76,647,841	\$97,139,765	\$20,491,924	3
Johns Hopkins Howard County General Hospital	Johns Hopkins Health System	\$20,706,967	\$25,826,621	\$5,119,654	9
Johns Hopkins Suburban Hospital	Johns Hopkins Health System	\$19,442,300	\$23,295,770	\$3,853,470	10
Anne Arundel Medical Center		\$20,253,154	\$23,649,709	\$3,396,555	13
Fort Washington Medical Center		\$5,841,368	\$7,700,536	\$1,859,168	19
University of Maryland Charles Regional Medical Center	University of Maryland Medical System	\$9,572,552	\$10,546,193	\$973,641	25
MedStar Southern Maryland Hospital Center	MedStar Health	\$16,646,289	\$17,583,088	\$936,799	26
Holy Cross Hospital	Trinity Health	\$157,009,222	\$133,374,845	-\$23,634,378	46

*Amount received in excess of charity provided.

Charity Care Denial Rates for the Top Hospitals Suing County Residents for Medical Debt: 2017 - 2018⁷

Hospital name	System	Licensed Beds	Application for Financial Assistance Received	Application for Financial Assistance Approved	Application for Financial Assistance Denied	Percent Denied
Johns Hopkins Howard County General Hospital	Johns Hopkins Health System	285	886	419	467	52.7%
Johns Hopkins Hospital	Johns Hopkins Health System	1,154	1,747	928	819	46.9%
Johns Hopkins Suburban Hospital	Johns Hopkins Health System	230	688	374	314	45.6%
Holy Cross Hospital	Trinity Health	449	8,277	4,691	3,586	43.3%
University of Maryland Capital Region Health at Laurel Regional and Prince George's Hospital	University of Maryland Medical System	365	550	375	175	31.8%
University of Maryland Medical Center	University of Maryland Medical System	751	1,707	1,237	470	27.5%
Anne Arundel Medical Center		415	945	762	183	19.4%
University of Maryland Charles Regional Medical Center	University of Maryland Medical System	104	277	247	30	10.8%
MedStar Southern Maryland Hospital Center	MedStar Health	182	9,738	9,643	95	1.0%
Fort Washington Medical Center		NA	NA	NA	NA	NA

Endnotes

- 1 All data based on the following source except where noted: Analysis of the case records of the Maryland Judiciary, available here: Maryland Judiciary Case Search Disclaimer: <http://casesearch.courts.state.md.us/casesearch/inquiry-index.jsp>
- 2 U.S. Census Bureau, 2013-2017 American Community Survey 5-Year Estimates.
- 3 Debt in America: An Interactive Map. The Urban Institute. https://apps.urban.org/features/debt-interactive-map/?type=auto&variable=autoopen_pct. Accessed 12/13/2019.
- 4 Source: Executive compensation was found on IRS Form 990 for appropriate years. Note: Multi-hospital systems often report the same executives on multiple 990 forms for individual hospitals.
- 5 Financial Information from audited financial reports, appropriate years.
- 6 Source: Maryland Health Services Cost Review Commission, Community Benefits Program, Maryland Hospital Community Benefit Financial Report: FY 2014 – 2018.
- 7 Source: Maryland Health Services Cost Review Commission, Annual Report of Revenue, Expenses, and Volumes, Supplemental Schedule VIII Debt Collection/Financial Assistance Report, <https://hscrc.state.md.us/Pages/ar-rev.aspx>