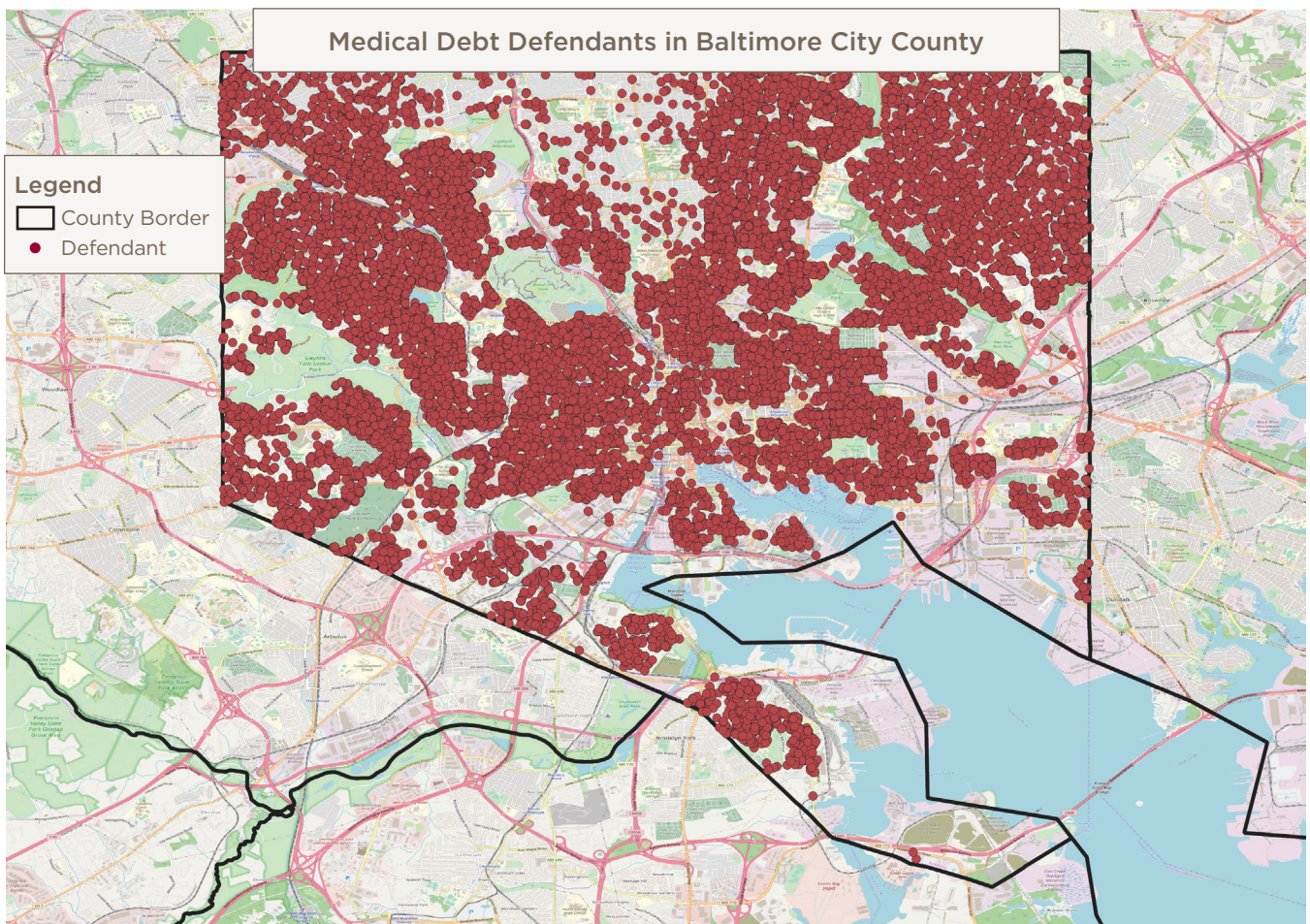


BALTIMORE CITY MEDICAL DEBT LAWSUITS 2009 – 2018

Medical Debt Lawsuits Filed Against County Residents¹

Total lawsuits against residents	30,070
Total amount of medical debt sought through lawsuits	\$53,571,018
Median amount of medical debt per lawsuit	\$982
Total cases involving wage or property garnishments	8,949
Total amount sought through garnishments	\$14,619,377

Where Medical Debt Lawsuit Defendants Live



Hospitals Filing Medical Debt Lawsuits Against County Residents

Hospital Name	System	Total Lawsuits	Amount	Median Amount	Garnishment Total	Garnishment Amount
Sinai Hospital of Baltimore	LifeBridge Health	5,845	\$8,616,738	\$900	2,136	\$3,041,840
Greater Baltimore Medical Center		4,825	\$5,157,869	\$685	1,496	\$1,697,371
University of Maryland Medical Center	University of Maryland Medical System	3,603	\$14,001,161	\$1,819	603	\$2,147,532
Mercy Medical Center		3,187	\$3,586,164	\$848	504	\$571,522
MedStar Good Samaritan Hospital	MedStar Health	2,345	\$3,855,219	\$900	899	\$1,519,022
MedStar Union Memorial Hospital	MedStar Health	1,943	\$3,432,600	\$930	706	\$1,253,627
Saint Agnes Healthcare	Ascension Healthcare	1,649	\$2,333,423	\$864	495	\$737,753
Johns Hopkins Hospital	Johns Hopkins Health System	1,160	\$2,446,182	\$1,443	343	\$632,267
MedStar Franklin Square Medical Center	MedStar Health	1,149	\$1,959,627	\$890	383	\$690,688
MedStar Harbor Hospital	MedStar Health	1,118	\$1,887,090	\$992	459	\$792,232
Johns Hopkins Bayview Medical Center	Johns Hopkins Health System	904	\$1,719,701	\$1,175	280	\$557,971
Northwest Hospital	LifeBridge Health	870	\$1,178,739	\$865	284	\$341,528
University of Maryland Medical Center Midtown Campus	University of Maryland Medical System	398	\$895,032	\$1,224	17	\$40,463
LifeBridge Health (only system info reported)	LifeBridge Health	291	\$379,030	\$904	189	\$267,548
University of Maryland St. Joseph Medical Center	University of Maryland Medical System	182	\$530,138	\$1,522	21	\$51,932
University of Maryland Rehabilitation & Orthopaedic Institute	University of Maryland Medical System	124	\$462,920	\$1,573	30	\$58,065
Johns Hopkins Howard General Hospital	Johns Hopkins Health System	115	\$231,936	\$1,095	36	\$78,701
Johns Hopkins Suburban Hospital	Johns Hopkins Health System	64	\$174,465	\$1,057	5	\$8,229
University of Maryland Baltimore Washington Medical Center	University of Maryland Medical System	60	\$121,016	\$1,086	25	\$45,538
Peninsula Regional Medical Center		35	\$41,575	\$694	13	\$10,651
Carroll Hospital Center	LifeBridge Health	27	\$76,339	\$1,234	2	\$2,595

Hospital Name	System	Total Lawsuits	Amount	Median Amount	Garnishment Total	Garnishment Amount
University of Maryland Capital Region Health at Laurel Regional and Prince George's Hospital	University of Maryland Medical System	25	\$54,702	\$1,423	7	\$13,456
University of Maryland Shore Medical Center	University of Maryland Medical System	24	\$43,051	\$969	3	\$3,676
Anne Arundel Medical Center		22	\$130,327	\$3,377	5	\$35,898
MedStar Health (only system info reported)	MedStar Health	19	\$32,702	\$1,005		
University of Maryland Medical System (only system info reported)	University of Maryland Medical System	17	\$69,237	\$1,954	1	\$1,840
MedStar Southern Maryland Hospital Center	MedStar Health	13	\$27,337	\$1,441		
Mt. Washington Pediatric Hospital	University of Maryland Medical System	10	\$8,506	\$569		
Johns Hopkins Health System (only system info reported)	Johns Hopkins Health System	8	\$30,349	\$3,844	2	\$4,188
MedStar Montgomery Medical Center	MedStar Health	8	\$18,616	\$1,784	3	\$12,328
Holy Cross Hospital	Trinity Health	7	\$8,752	\$1,295		
Meritus Medical Center		7	\$14,152	\$2,253	1	\$325
Atlantic General Hospital		5	\$2,914	\$540		
University of Maryland Charles Regional Medical Center	University of Maryland Medical System	3	\$7,236	\$1,873	1	\$589
Fort Washington Medical Center		2	\$2,620	\$1,310		
Union Hospital		2	\$1,641	\$821		
University of Maryland Harford Memorial Hospital	University of Maryland Medical System	2	\$30,301	\$15,151		
CalvertHealth Medical Center		1	\$1,037	\$1,037		
MedStar St. Mary's Hospital	MedStar Health	1	\$571	\$571		
Total		30,070	\$53,571,018	\$982	8,949	\$14,619,377

County Information²

Total Population	Individuals Living in Poverty	Children Living in Poverty	Median Household Income	Individuals Without Health Insurance	Unemployed	White	African American	Hispanic or Latino	Asian
596,590	133,793	41,988	\$46,641	48,985	30,749	163,767	376,479	29,534	14,860

Medical Debt Lawsuits Victimize Low-Wage Workers

Top four private-sector employers for wage garnishment victims:

- Walmart
- Johns Hopkins
- Home Depot
- Medstar

Medical Debt Lawsuits Victimize Public Workers

Top three public-sector employers for wage garnishment victims:

- Public Schools
- State of Maryland
- Federal Government Agencies

Share of County Residents with Medical Debt in Collections³

- Overall: 29%
- White communities: 19%
- Communities of color: 32%

Executive Compensation for Top Hospitals Suing County Residents: Last Five Years⁴

Hospital Name	System	Total Executive Compensation	Number of Annual Payments to Executives	Number of Individual Executives	Number of Annual Payments More Than \$1 Million	Total Number of Payments That Put Executives in Maryland's Top 1%
Johns Hopkins Hospital	Johns Hopkins Health System	\$124,919,403	196	56	35	82
MedStar Union Memorial Hospital	MedStar Health	\$87,225,549	90	28	32	58
University of Maryland Medical Center	University of Maryland Medical System	\$80,154,293	79	26	21	76
MedStar Good Samaritan Hospital	MedStar Health	\$70,259,076	86	27	11	50
Greater Baltimore Medical Center		\$64,573,261	113	35	12	53
Sinai Hospital of Baltimore	LifeBridge Health	\$63,282,197	69	28	29	53
MedStar Harbor Hospital	MedStar Health	\$62,037,197	73	24	9	43
MedStar Franklin Square Medical Center	MedStar Health	\$59,615,118	60	20	7	41
Saint Agnes Healthcare	Ascension Healthcare	\$41,192,598	58	19	5	47
Mercy Medical Center		\$35,296,181	60	17	4	40

Net Income for Top Hospitals Filing Medical Debt Lawsuits in County: 2009 – 2018⁵

Hospital Name	System	Total Operating Revenues	Net Income
University of Maryland Medical Center	University of Maryland Medical System	\$12,606,743,000	\$728,614,000
Johns Hopkins Hospital	Johns Hopkins Health System	\$19,861,730,000	\$609,011,000
Sinai Hospital of Baltimore	LifeBridge Health	\$5,766,330,000	\$314,139,000
Saint Agnes Healthcare	Ascension Healthcare	\$4,212,130,000	\$278,388,000
Greater Baltimore Medical Center		\$4,563,670,239	\$221,161,630
Mercy Medical Center		\$6,181,693,000	\$170,419,000
MedStar Franklin Square Medical Center	MedStar Health	\$3,959,900,000	\$133,500,000
MedStar Harbor Hospital	MedStar Health	\$1,639,700,000	\$94,200,000
MedStar Union Memorial Hospital	MedStar Health	\$3,415,900,000	\$87,600,000
MedStar Good Samaritan Hospital	MedStar Health	\$2,441,600,000	\$57,000,000

Profiting from Charity Rate Support⁶: Charity Rate Support Levels for the Top Hospitals Suing County Residents for Medical Debt, 2014 - 2018

Hospital name	System	Charity Care Provided — Last Five Years	Charity Care Rate Support Total — Last Five Years	Charity Care Rate Support Surplus*: Last Five Years	Rank: Largest Surplus* of Charity Rate Support
Johns Hopkins Hospital	Johns Hopkins Health System	\$133,216,000	\$169,496,419	\$36,280,419	1
University of Maryland Medical Center	University of Maryland Medical System	\$179,526,226	\$205,952,948	\$26,426,722	2
MedStar Franklin Square Medical Center	MedStar Health	\$37,249,258	\$47,879,563	\$10,630,306	5
MedStar Union Memorial Hospital	MedStar Health	\$32,241,348	\$39,702,996	\$7,461,647	7
MedStar Harbor Hospital	MedStar Health	\$19,488,714	\$26,788,827	\$7,300,113	8
Sinai Hospital of Baltimore	LifeBridge Health	\$35,393,023	\$37,959,583	\$2,566,560	18
Saint Agnes Healthcare	Ascension Healthcare	\$96,973,115	\$98,509,292	\$1,536,177	22
Greater Baltimore Medical Center		\$11,815,062	\$13,059,540	\$1,244,478	23
Mercy Medical Center		\$91,368,182	\$91,732,422	\$364,240	29
MedStar Good Samaritan Hospital	MedStar Health	\$23,075,190	\$21,788,579	(\$1,286,611)	38

*Amount received in excess of charity provided.

Charity Care Denial Rates for the Top Hospitals Suing County Residents for Medical Debt: 2017 – 2018⁷

Hospital name	System	Licensed Beds	Application for Financial Assistance Received	Application for Financial Assistance Approved	Application for Financial Assistance Denied	Percent Denied
Johns Hopkins Hospital	Johns Hopkins Health System	1,154	1,747	928	819	46.90%
University of Maryland Medical Center	University of Maryland Medical System	751	1,707	1,237	470	27.50%
Greater Baltimore Medical Center		269	529	468	61	11.50%
Mercy Medical Center		204	711	685	26	3.70%
MedStar Franklin Square Medical Center	MedStar Health	369	21,362	20,950	412	1.90%
MedStar Good Samaritan Hospital	MedStar Health	206	18,846	18,675	171	0.90%
MedStar Union Memorial Hospital	MedStar Health	183	23,097	22,946	151	0.70%
MedStar Harbor Hospital	MedStar Health	133	14,412	14,329	83	0.60%
Sinai Hospital of Baltimore	LifeBridge Health	448	3,278	3,268	10	0.30%
Saint Agnes Healthcare*	Ascension Healthcare	287	943	992		0.00%

*Only one year of data available.

Endnotes

- 1 All data based on the following source except where noted: Analysis of the case records of the Maryland Judiciary, available here: Maryland Judiciary Case Search Disclaimer: <http://casesearch.courts.state.md.us/casesearch/inquiry-index.jsp>
- 2 U.S. Census Bureau, 2013-2017 American Community Survey 5-Year Estimates.
- 3 Debt in America: An Interactive Map. The Urban Institute. https://apps.urban.org/features/debt-interactive-map/?type=auto&variable=autoopen_pct. Accessed 12/13/2019.
- 4 Source: Executive compensation was found on IRS Form 990 for appropriate years. Note: Multi-hospital systems often report the same executives on multiple 990 forms for individual hospitals.
- 5 Financial Information from audited financial reports, appropriate years.
- 6 Source: Maryland Health Services Cost Review Commission, Community Benefits Program, Maryland Hospital Community Benefit Financial Report: FY 2014 – 2018.
- 7 Source: Maryland Health Services Cost Review Commission, Annual Report of Revenue, Expenses, and Volumes, Supplemental Schedule VIII Debt Collection/Financial Assistance Report, <https://hscrc.state.md.us/Pages/ar-rev.aspx>